

Progetto  
LAVORI DI ADEGUAMENTO NORMATIVO  
DELL'IPPODROMO DI PIAN DELLE FORNACI - 1 STRALCIO - LAVORI DI COMPLETAMENTO  
Località COSTALPINO, SIENA

scala 1:100 dati ultimo aggiornamento MAGGIO 2011 Tracce

6

Responsabile del procedimento  
Ing. Marco Massimo Foglia

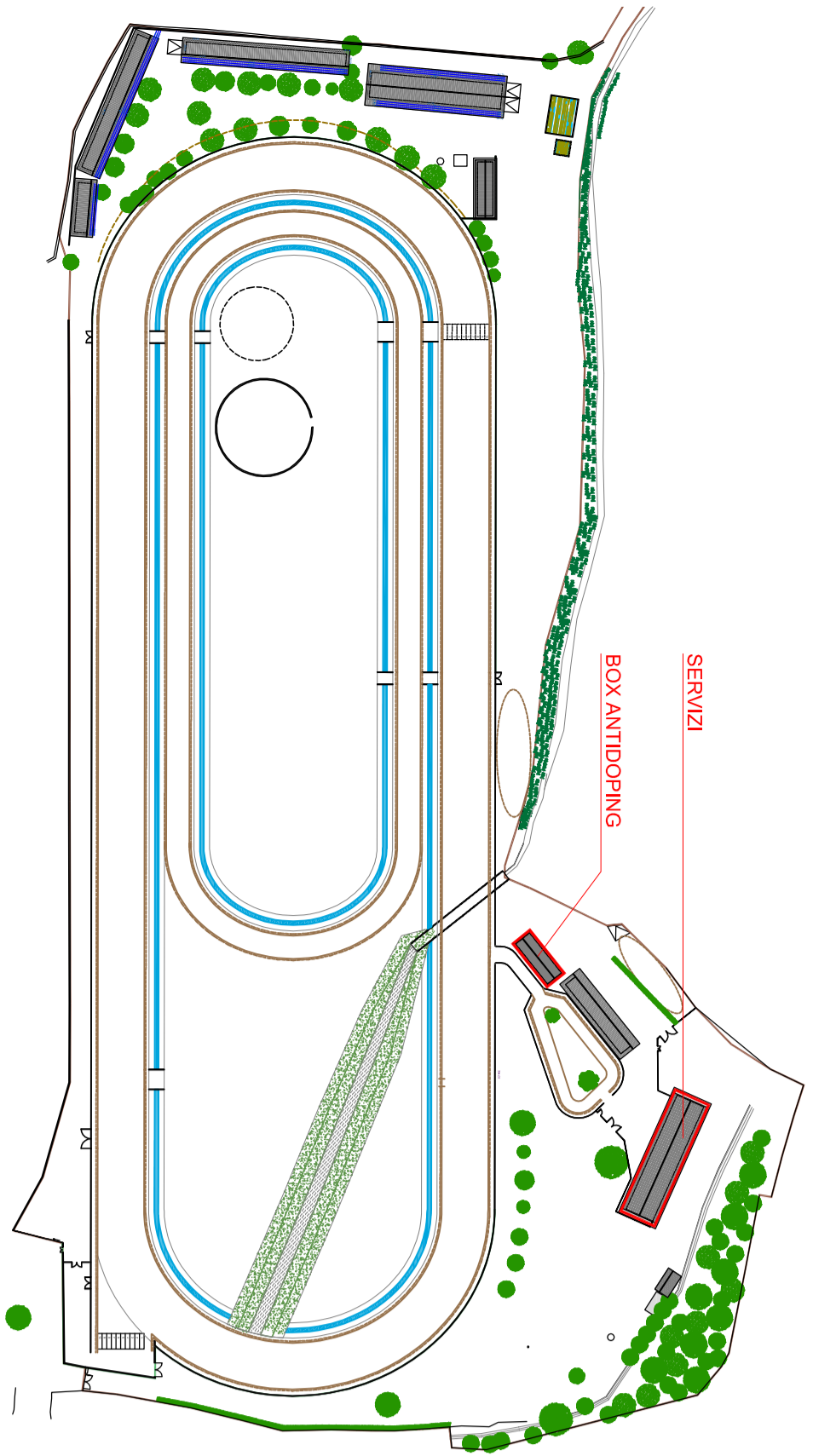
Il Progettista  
Ing. Francesco Montagnani

Il Collaboratore  
P.L. Stefano Redolini

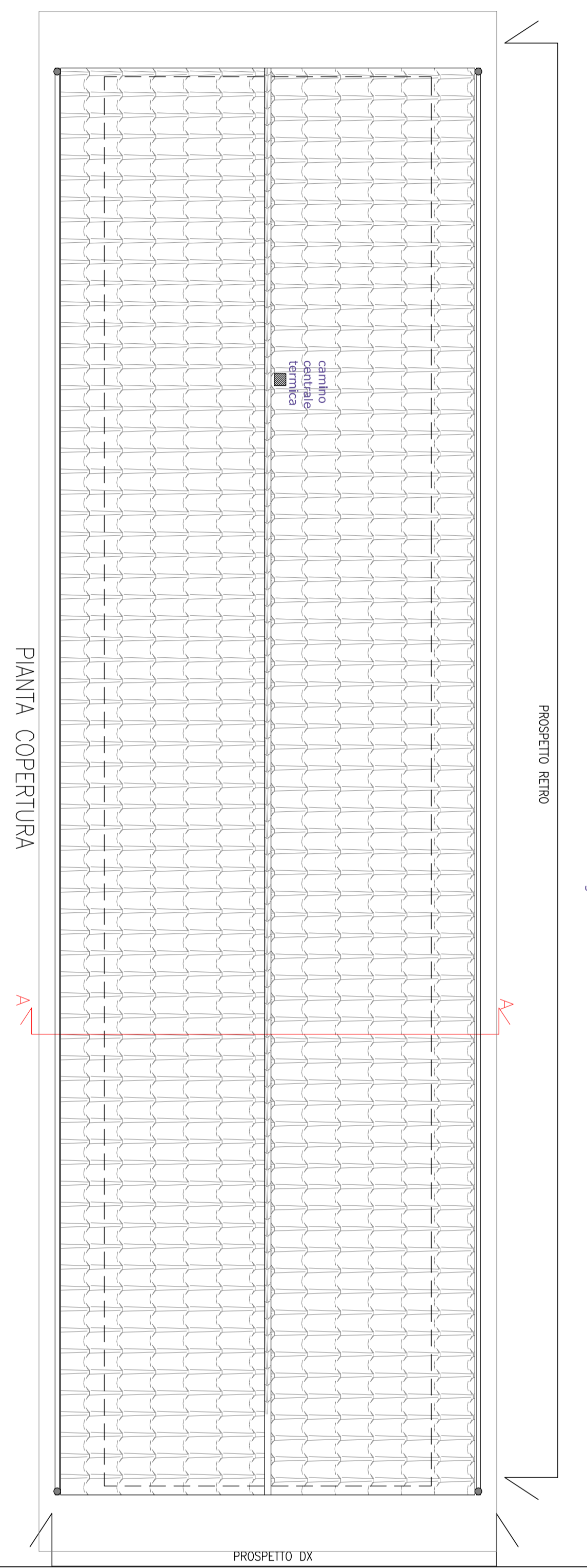
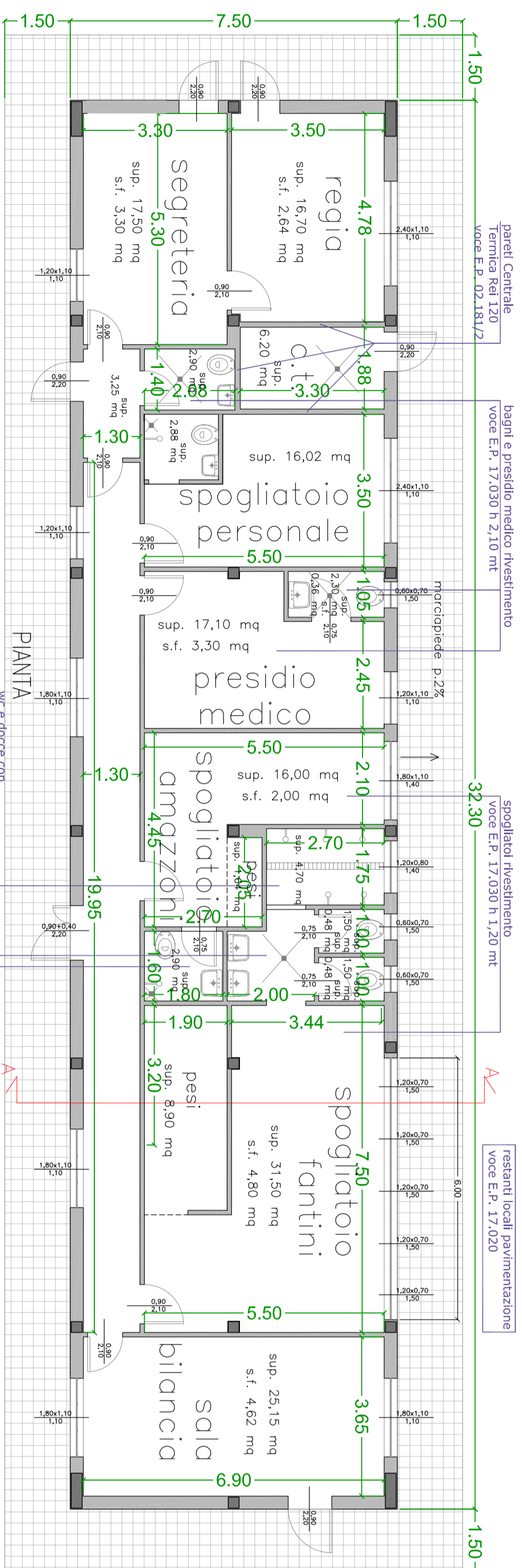
Il Collaboratore  
P.E. Stefano Casali

Il Collaboratore  
Geom. Chiara Galati

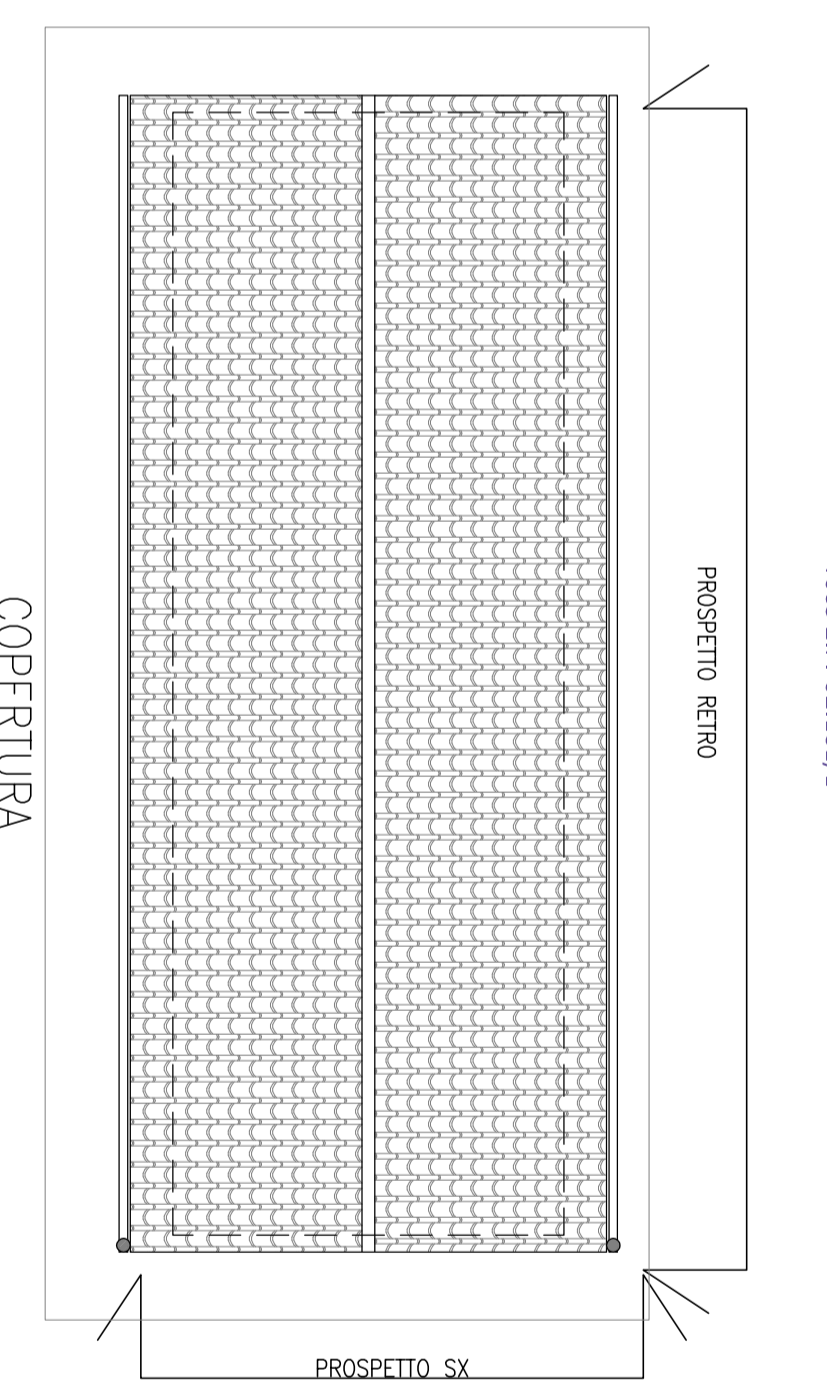
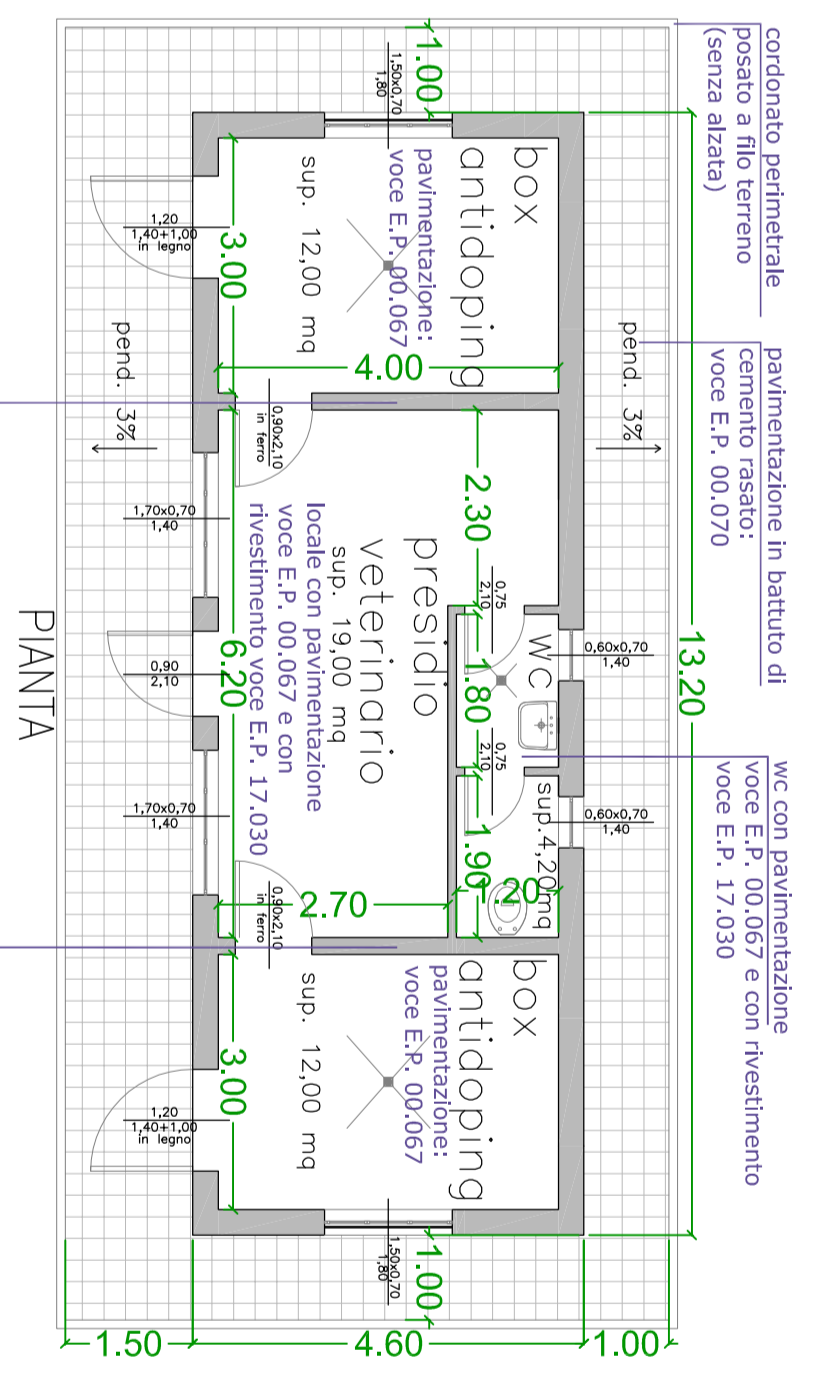
Il Collaboratore  
P.E. Silvio Brunacci



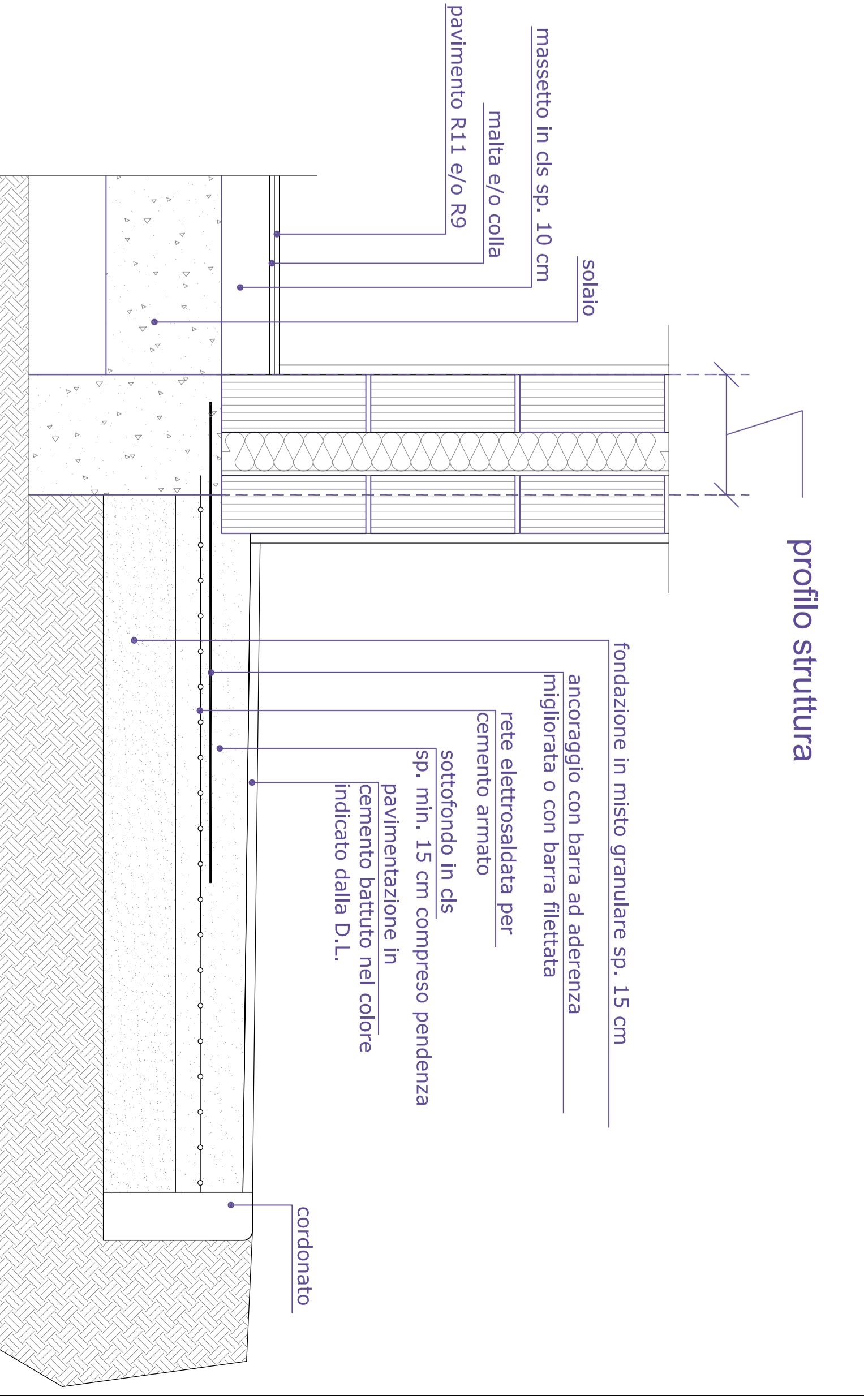
SERVIZI



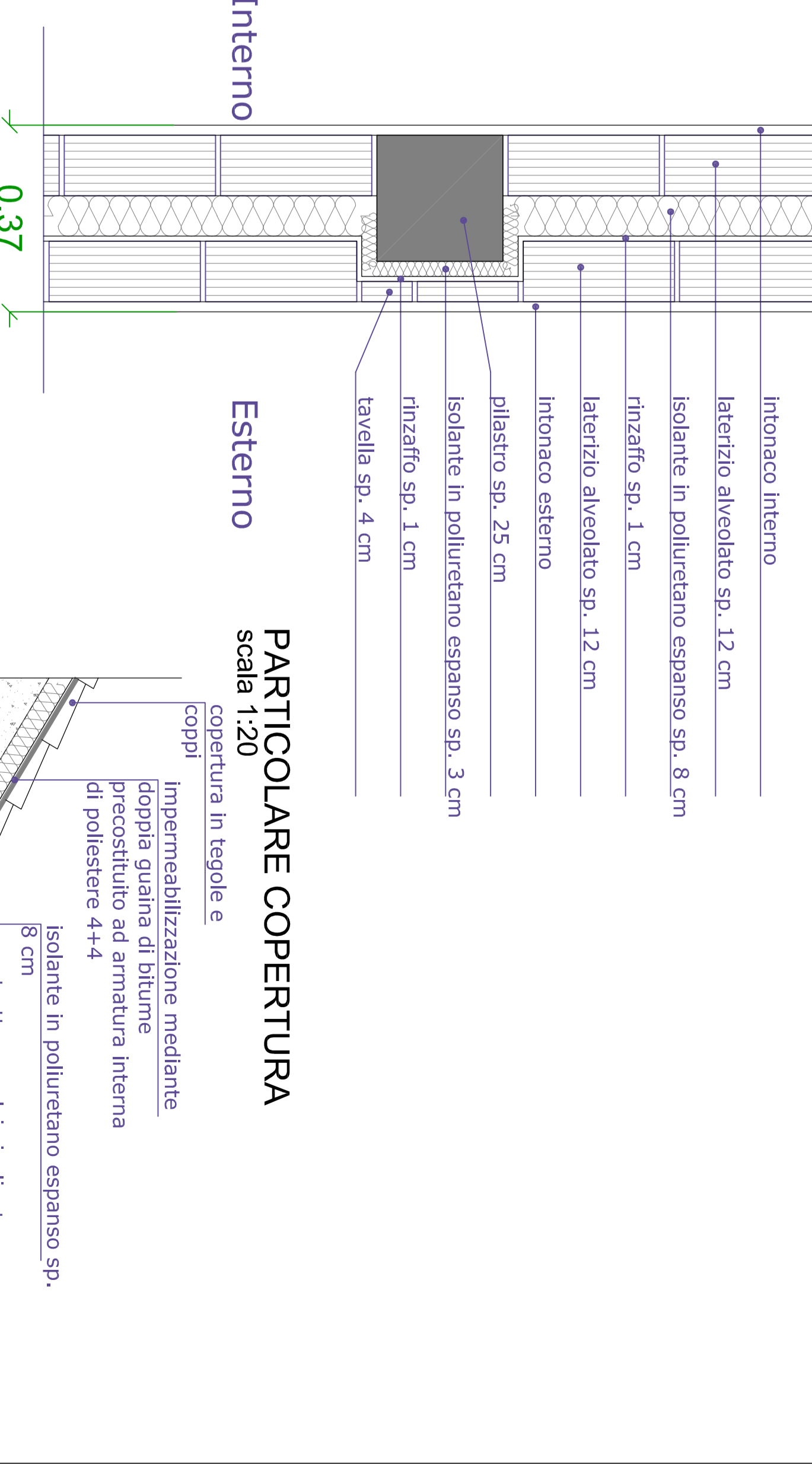
BOX ANTIDOPING



PARTICOLARE MARGAPIEDE



PARTICOLARE PACCHETTO MURATURA PERIMETRALE



PARTICOLARE COPERTURA

